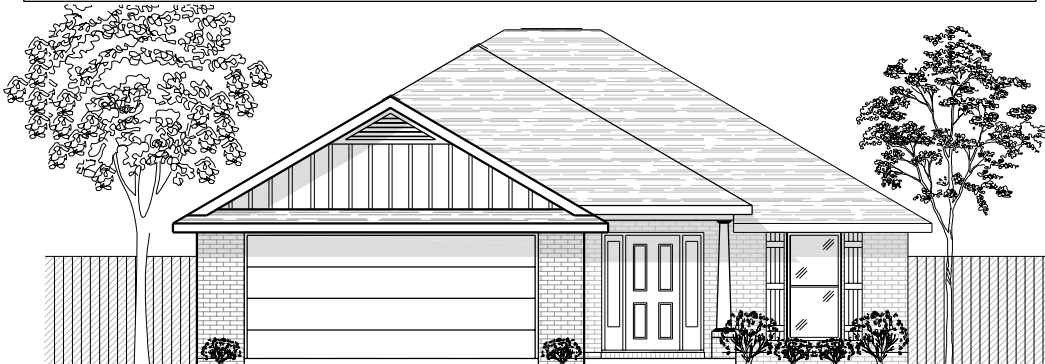
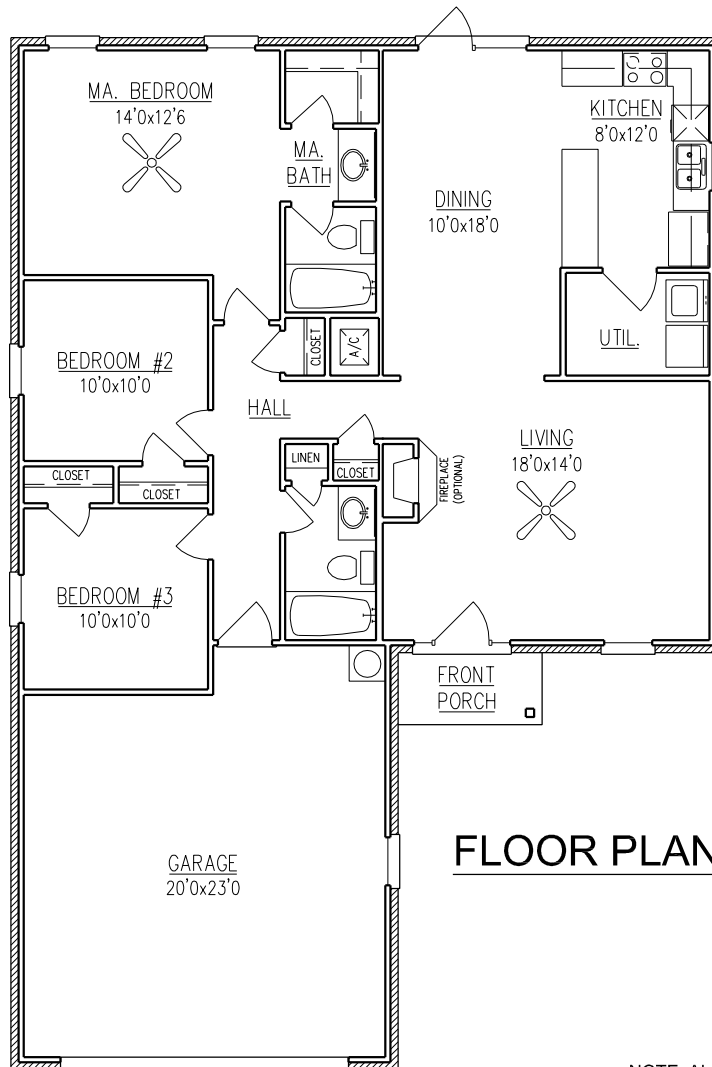


MAYFIELD

1,372 Sq. Ft.



ELEVATION (D)



FLOOR PLAN

WIDTH - 39'-6"
DEPTH - 57'-4"

NOTE: ALL DIMENSIONS APPROXIMATE



Mobile Office (251) 473-8600 Fax (251) 473-8797
2936 McVay Drive North
Mobile, AL 36606 www.BrickHome.net
Foley Office (251) 943-7097 Fax (251) 943-7096
16478 Highway 98 West
Foley, AL 36535 Toll Free 1-800-924-7288

BROCHURE IS AN EXAMPLE NOT AN EXACT REPRESENTATION. ELEVATION AND FEATURES MAY DIFFER.