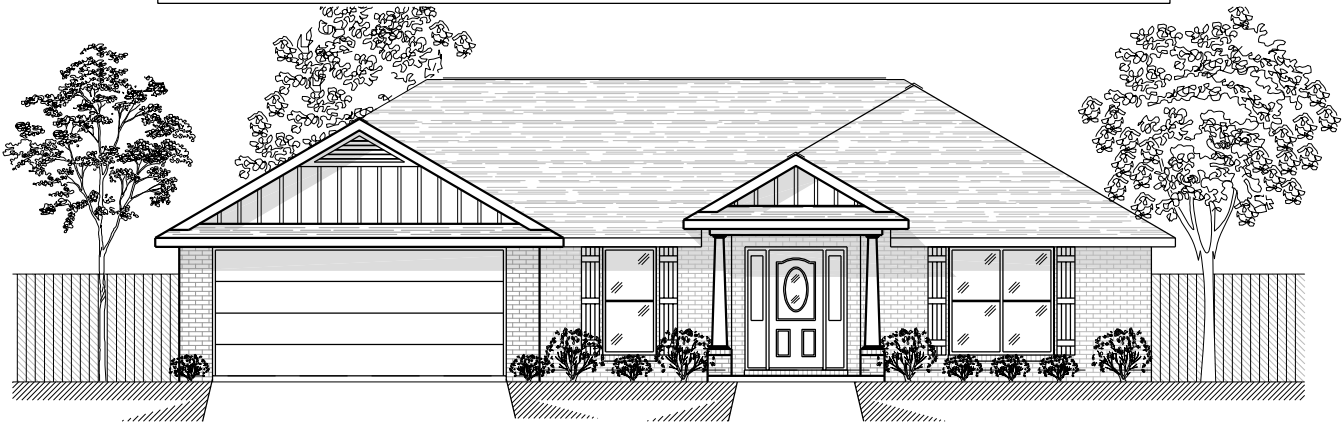
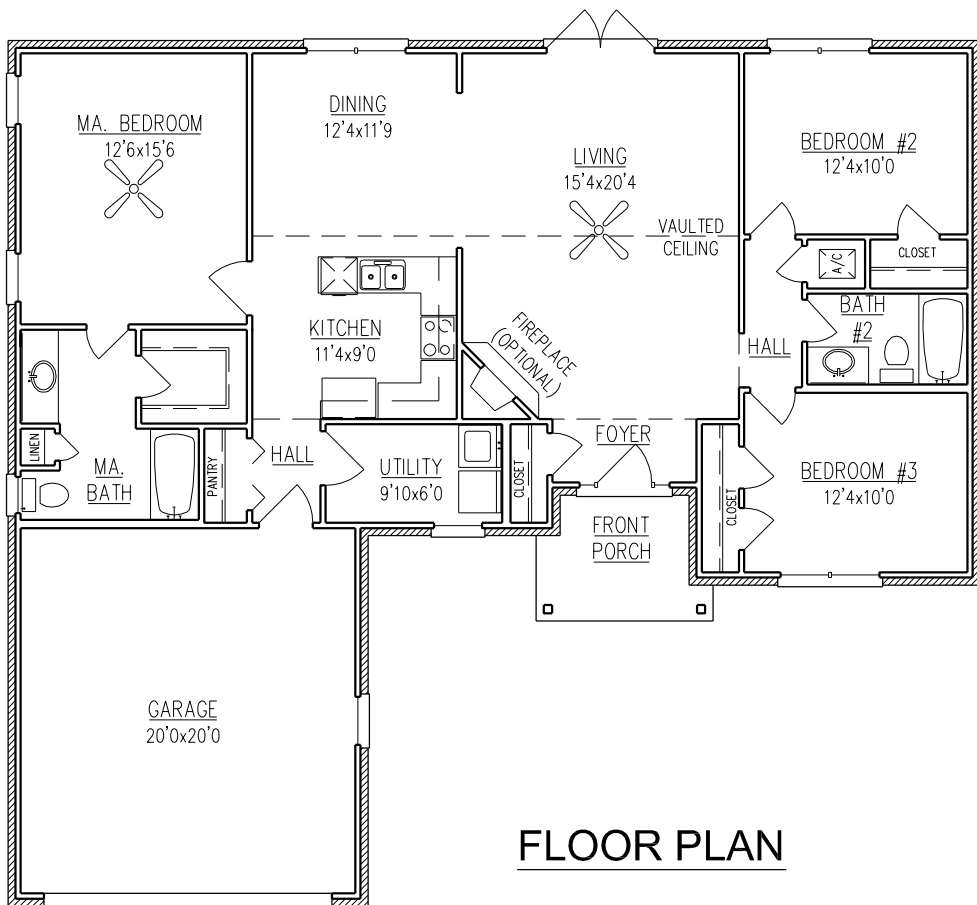


# CREEKSIDE II

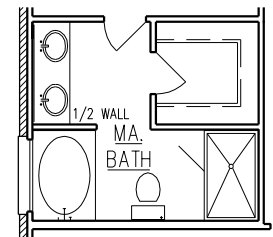
1,505 Sq. Ft.



ELEVATION (D)



FLOOR PLAN



OPTIONAL  
MA. BATH.

WIDTH - 54'-0"  
DEPTH - 48'-5"

NOTE: ALL DIMENSIONS APPROXIMATE



Mobile Office (251) 473-8600 Fax (251) 473-8797  
2936 McVay Drive North  
Mobile, AL 36606 [www.BrickHome.net](http://www.BrickHome.net)  
Foley Office (251) 943-7097 Fax (251) 943-7096  
16478 Highway 98 West  
Foley, AL 36535 Toll Free 1-800-924-7288

BROCHURE IS AN EXAMPLE NOT AN EXACT REPRESENTATION. ELEVATION AND FEATURES MAY DIFFER.